

Gain 70dB, Output 20dBm

Overview:

440018 wireless Pico Repeater is a fast and cost effective solution widely deployed to provide coverage improvement for in-building solution, especially for areas without optical access and emergency coverage, eg. house, apartment or office area 500-1000sq.m.

440018F wireless Pico Repeater receives and amplifies signal from donor BTS. It is a bi-directional amplifier transmitting signal to coverage area, bringing coverage to the shadow or blind area in rural and urban buildings where the BTS footprints can't reach.

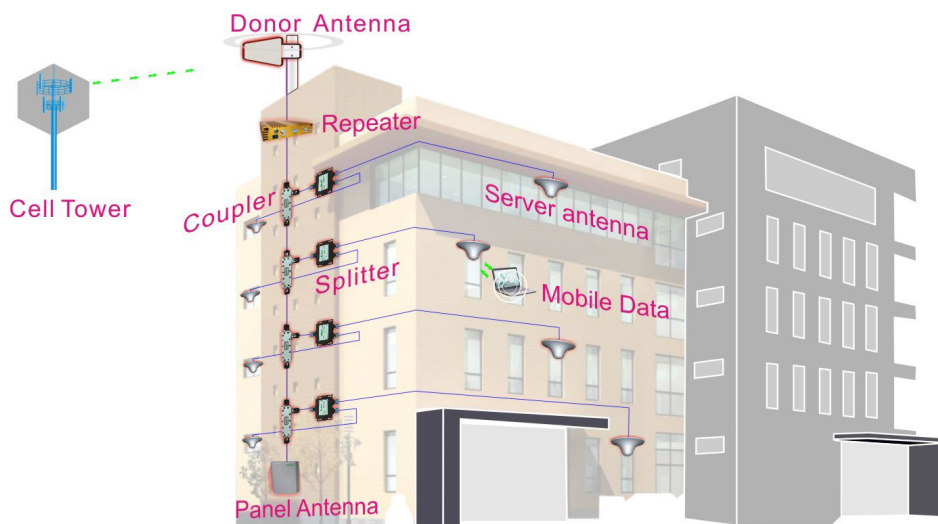
Features:

1. Elegant and Compact design.
2. Built-in AGC and ALC circuits, which can automatically control the gain of the repeater depending upon the strength of input signals.
3. 31dB MGC (Manual gain control) 5dB one step available for both uplink and downlink to adjust the gain value for proper coverage during installation or maintenance.
4. Auto shut off function available for both uplink and downlink to avoid deep self-oscillations from jamming the towers, saving your trouble from operators.
5. Low power consumption – less than 20W only.

Product Photos:



Applications:



* MCC reserves the right to make the changes considered necessary in this document.

Specification:

Electrical specification		Uplink	Downlink
Frequency Range	UMTS900/GSM900	890–915MHz	935–960MHz
Max. Gain		≥65dB	≥70dB
Max. Output Power		≥15dBm	≥20dBm
Bandwidth		25MHz	
MGC (Step Attenuation)		31dB / 1dB step	
Automatic Level Control		≥20dB	
Gain Flatness		≤ 2dB/3.84MHz	
Noise Figure		≤ 6dB	
Out of Band Gain	2.7≤f_offset<3.5MHz	≤ 60dB	
	3.5≤f_offset<7.5MHz	≤ 45dB	
	7.5≤f_offset<12.5MHz	≤ 45dB	
	12.5≤f_offset	≤ 35dB	
Spurious Emission	9KHz-1GHz	≤ -36dBm	≤ -36dBm
	1GHz-12.75GHz	≤ -30dBm	≤ -30dBm
Spurious Emission Mask	Comply with 3GPP TS 25.106		
Modulation Accuracy	≤ 12.5%		
Peak Code Domain Error	≤ -35dB@Spreading Factor 256		
ACRR	20dBc@±5MHz & 30dBc@±10MHz		
V.S.W.R	≤ 1.8		
Group Delay	≤ 5μs		
Frequency stability	≤ 0.01ppm		
LED Alarm	Standard		
Power LED	Power Indicator		
ALC LED	Orange @ ALC 1-5dB, Red @ ALC 20dB-25dB		
Mechanical Specifications	Standard		
I/O Port	N-Female		
Impedance	50 ohm		
Operating Temperature	-10°C to +40°C		
Environment Conditions	IP40		
Dimensions	250*125*52mm		
Weight	≤ 2.5KG		
Power Supply Adapter	Input AC90~264V, Output DC9V/3A		